



SOFTWARE INSTRUCTIONS

INSTALLING AND USING THE GCP 4000 OFFICE CONFIGURATION EDITOR (PART OF DT APPLICATION, 9V774-A01X)

May 2007

DOCUMENT NO. SIG-00-07-05

VERSION A

Safetran Systems Corporation, California Division
10655 7th Street, Cucamonga, California 91730
1-800-793-SAFE

Copyright © 2007 Safetran Systems Corporation

A. BACKGROUND

The Diagnostic Terminal (DT) software that runs on a laptop or desktop PC has a special mode called the GCP4000 Office Configuration Editor. The DT can either be used in a connected mode whereby the PC that the DT is running on is connected via a serial cable to a GCP4000, or in a disconnected mode whereby the user may set all of the programming options for a particular application. This latter mode is called the Office Configuration Editor (OCE). The same software is used in either mode, and may also be used in the connected mode as the Diagnostic Terminal for GEO and SSCC IIIA, SSCC III*Plus* and SSCC IV products.

The intention of the Office Configuration Editor is to allow users to select all of the programming options needed for a particular GCP4000 application and then produce a report that lists all of the programming steps required. This report can be incorporated as part of the site-specific plans. It is highly recommended that the template-programming feature of the GCP4000 be utilized, since this allows the minimum programming steps report to be as short as possible, simplifying programming. With the minimum programming step report, the person programming the GCP4000 simply selects the correct template and then programs the exceptions as listed on the report.

The Office Configuration Editor is also an excellent tool for presentations to show the capability of the GCP4000, as well as a very good teaching/training tool to discover some of the more advanced programming options.

B. INSTALLING THE DT SOFTWARE

As is normal for most software installation instructions, it is recommended that all Windows applications that are running be closed prior to installing the software (do this before you put the CD in the computer). The software should work under Windows XP, 2000, NT and 98 operating systems.

Insert the CD containing the software into the computer and it should automatically start the installation program. If the Windows auto run feature does not work, run the setup.exe program at the top level of the CD.

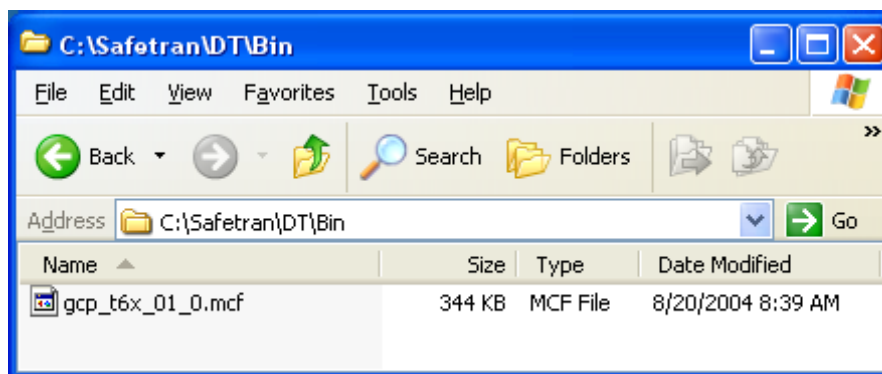
The InstallShield program will then run. If a previous installation of the DT is detected you will need to uninstall that version first. Once any previous version has been removed, you will be given step-by-step instructions to install the software. It is recommended that you accept the defaults as this makes certain future updates easier.

Reboot the computer once installation has completed.

C. RUNNING THE DT FOR THE FIRST TIME

The Office Configuration Editor uses a file called the Module Configuration File (MCF) as the basis for determining which features will be available as part of the GCP4000 programming. Since the GCP4000 MCF can change independently of the DT, the MCF is not included on the CD that contains the DT. The latest GCP4000 MCF can be obtained by contacting Safetran Customer Service (1-800-793-7233) and will typically be distributed by email. The DT is not distributed via email, as it is too large. Note that only GCP4000 MCFs are compatible with the Office Configuration Tool.

After obtaining the latest GCP4000 MCF, copy it to the DT\BIN directory where the DT was installed (the default is C:\SAFETRAN\DT\BIN).

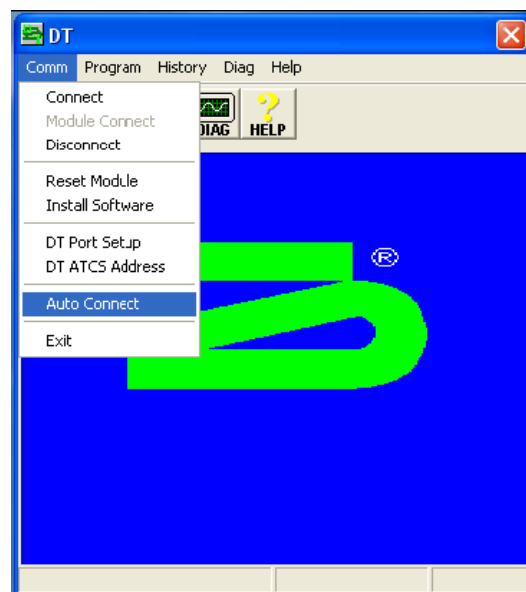


Run the DT by selecting:

Start -> Programs -> Safetran -> DT

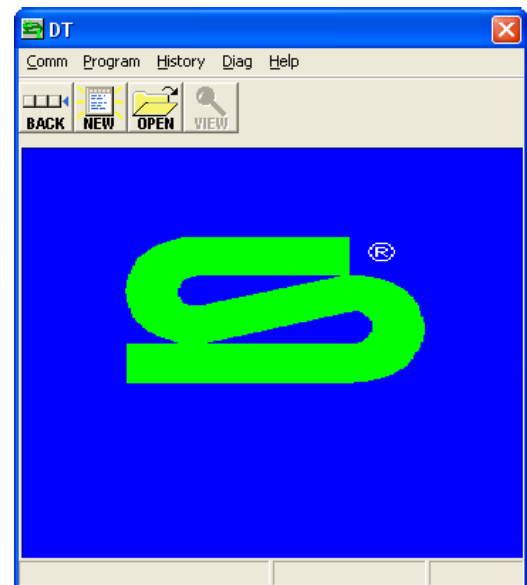
A DT icon can be created on the PC desktop by right clicking on the DT and dragging it to the desktop.

When the DT starts for the first time its default mode is “Connected”, i.e. it is assuming that a GCP4000 is connected via a serial cable. For the purposes of this document we will assume that you want to run the DT in the “Disconnected” mode (i.e. the Office Configuration Editor mode). To set the DT up in the Office Configuration Tool mode, select the **Comm** menu, and uncheck the “Auto Connect” option by selecting it.



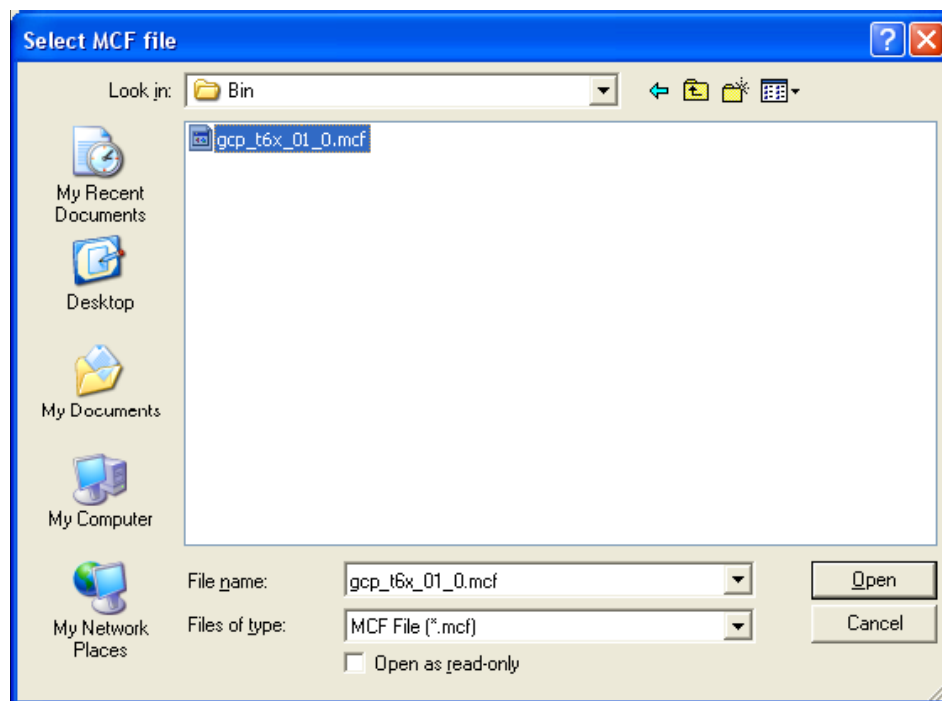
Select the Programming (**PROG**) button to get to this screen:

At this screen you can either start a new configuration (**NEW** button), or open an existing configuration (**OPEN** button).



D. STARTING A NEW CONFIGURATION

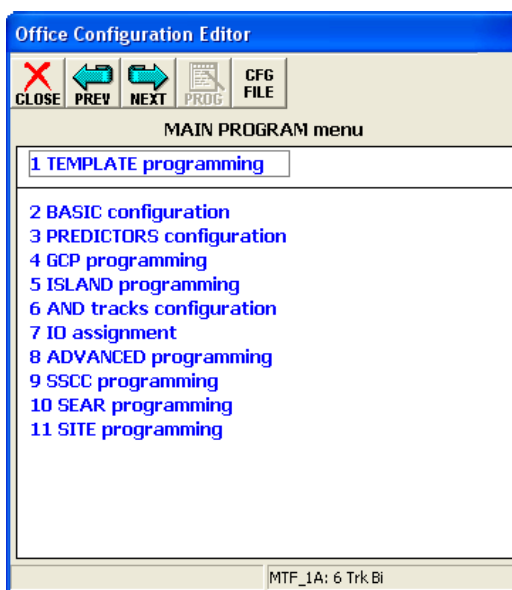
Select the **NEW** button and the “Select MCF File” dialogue box (see below) appears. Locate the MCF file that was previously copied to the BIN directory and select **OPEN**.



NOTE

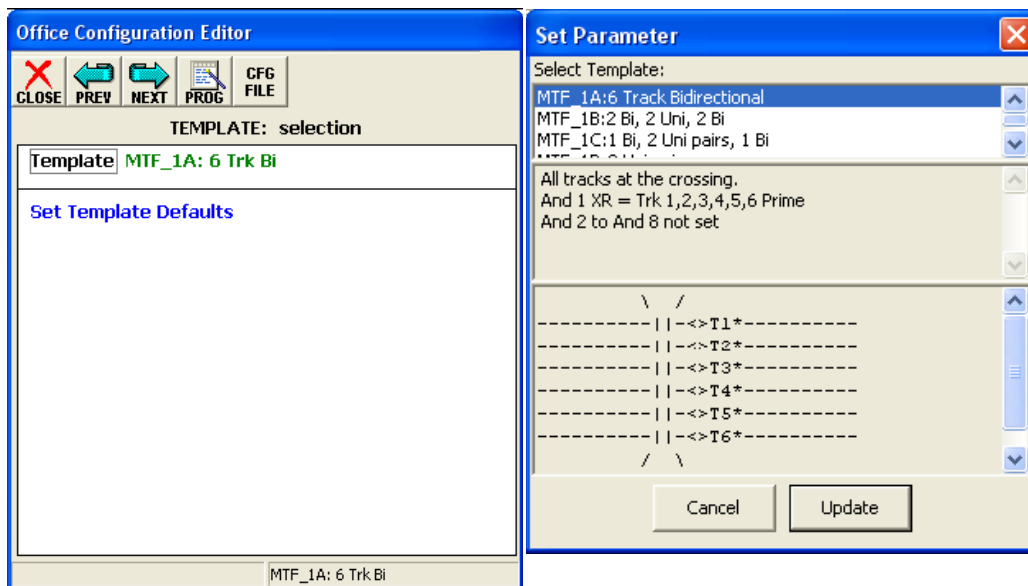
Do not use the DT\MCF directory to store the MCF since this is used during the connected mode.

The DT will then open the MCF file and present the Office Configuration Editor screen (see below).



Office Configuration Editor Main Program Menu

The Office Configuration Editor is now ready for use. Typically, start by selecting a Template using the TEMPLATE programming option (option 1), and then selecting a template (the green text to the right of “Template”). Then scroll down through the templates to select the correct one for your application.

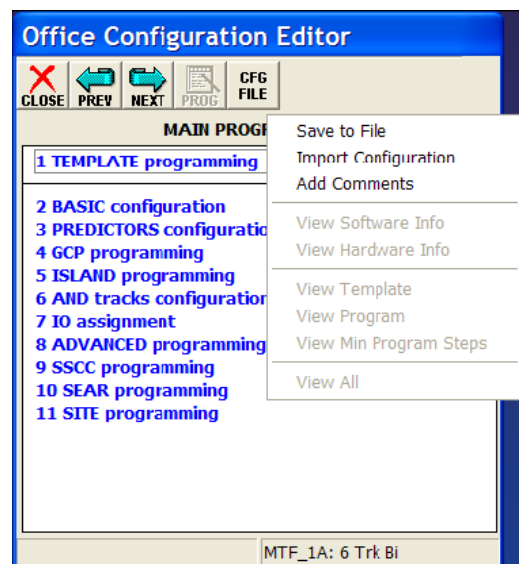


Once the template has been selected, you are then taken back to the Main Program Menu. From here you can repeatedly select the **NEXT** button to cycle through the template programming options. Note that these options are a subset of all available programming options and are tailored to the specific application of the template. You can change any of the values as you go through the template programming steps.

Once template programming is completed, there may be some steps that were not presented in the template programming. To view these steps, or to go through all of the programming options, select the **PROG** button to return to the Main Program Menu, and then select from menu items 2 through 11 to view the material of interest. Select 2 as the starting point if you are interested in stepping through all the items – and then just select **NEXT**.

Note that the programming screens and selection options will adjust themselves to only show options that you have turned on. For example, you will only be given the option of assigning I/O to Track 2 if you turn “Track 2 Slot” to “Track” on the Basic Configuration screen. Parameters marked with an asterisk (*) in the left margin indicate that additional parameters will be shown once that option is turned on.

At any point during the programming you may save the current state of the configuration to a file. These files are called Configuration Package files (PAC files) and have a .PAC extension. Save the file by selecting the **CFG FILE** button, and the “Save to File” option. The save file dialogue box uses a default name (DOT number) as the file name, although this can be changed.



E. LOADING A SAVED CONFIGURATION

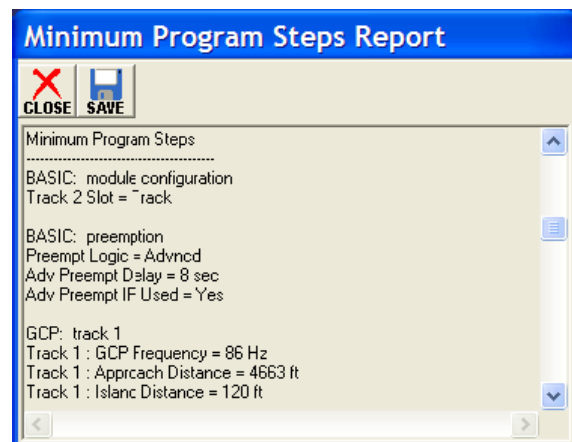
An existing configuration that was saved as a .PAC file can be loaded by selecting the **OPEN** button on the DT screen (close the Programming Screen to get to this option). This will load the saved settings.

F. PROGRAMMING REPORTS

When a configuration is saved to a .PAC file, a number of text files are created at the same time and in the same directory as the PAC file (using the same first part of the name as the PAC file):

- a) *_HWInfo.txt* – if PC is connected to a GCP4000, this would record all hardware version information for each module.
- b) *_SWInfo.txt* – if PC is connected to a GCP4000, this would record all software version information for each module.
- c) *_Template.txt* – lists the settings for a selected template.
- d) *_Program.txt* – lists all the possible programming steps for the options that were selected (or turned on).
- e) *_MinProgram.txt* – lists the minimum programming steps in template order required to program the application (exceptions to the template defaults).
- f) *_SysConfig.txt* – combination report of all the above reports.

The intention is for the *_MinProgram.txt* file to be incorporated as part of the site plans. Any text editor may view these files (e.g. Notepad), and they may also be viewed by selecting the appropriate report under the **CFG FILE** button.



G. IMPROVEMENTS & PROBLEM REPORTS

If you encounter any problems when using the tool, please report them to Safetran Technical Support in the first instance. It helps to have a screen dump of the screens in question or .PAC files, together with the version of the DT you are using, which MCF you are using, and any .TXT files that were created - plus as much detail as possible as to how the problem arose.

The version of the DT can be found by pressing the **HELP** button on the first screen to display the “About Diagnostic Terminal” screen.



To make a screen dump or capture, select the window in question, and simultaneously press ALT-Print Screen on the PC keyboard. Immediately paste the picture into an email or Word document using Ctrl-V or the Paste command.